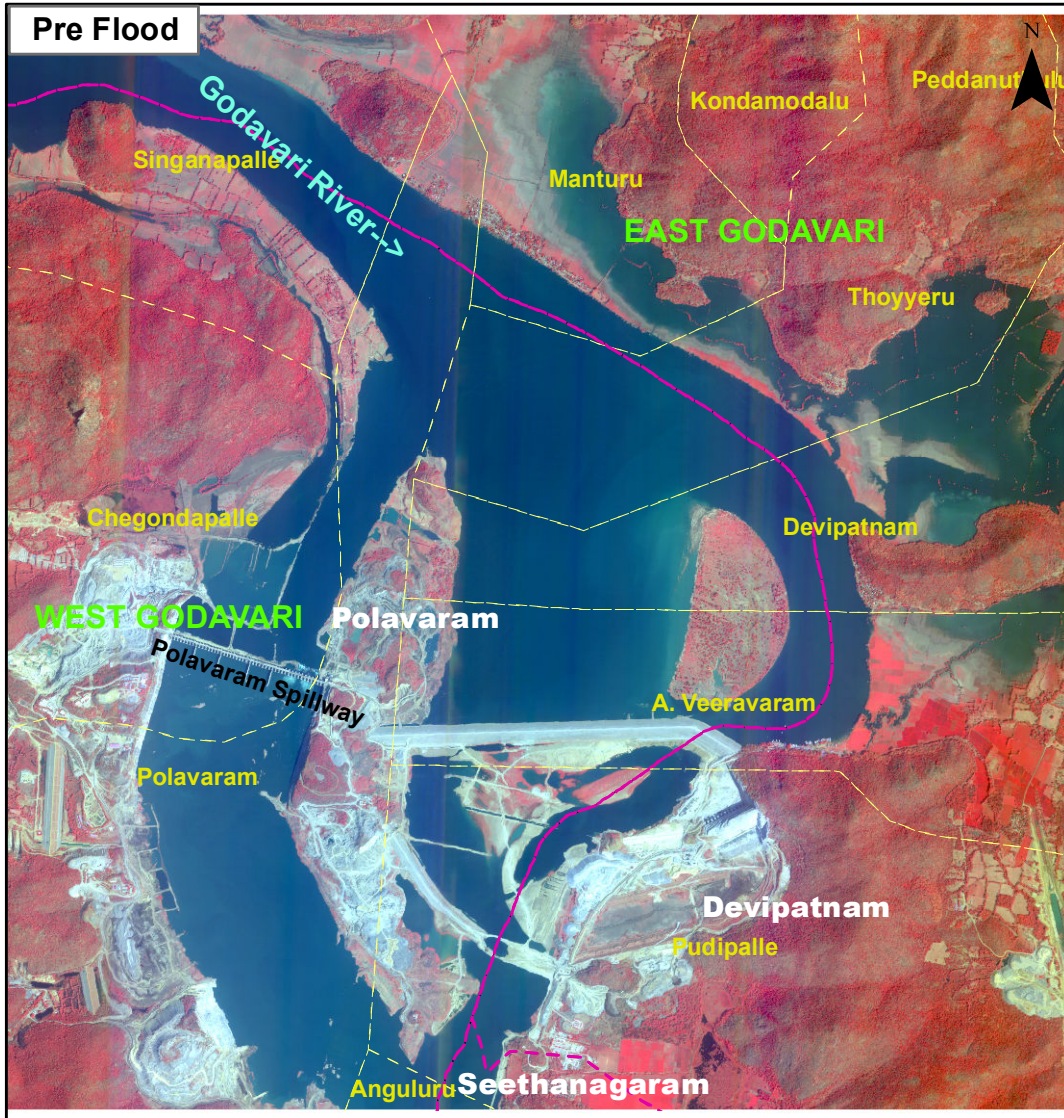


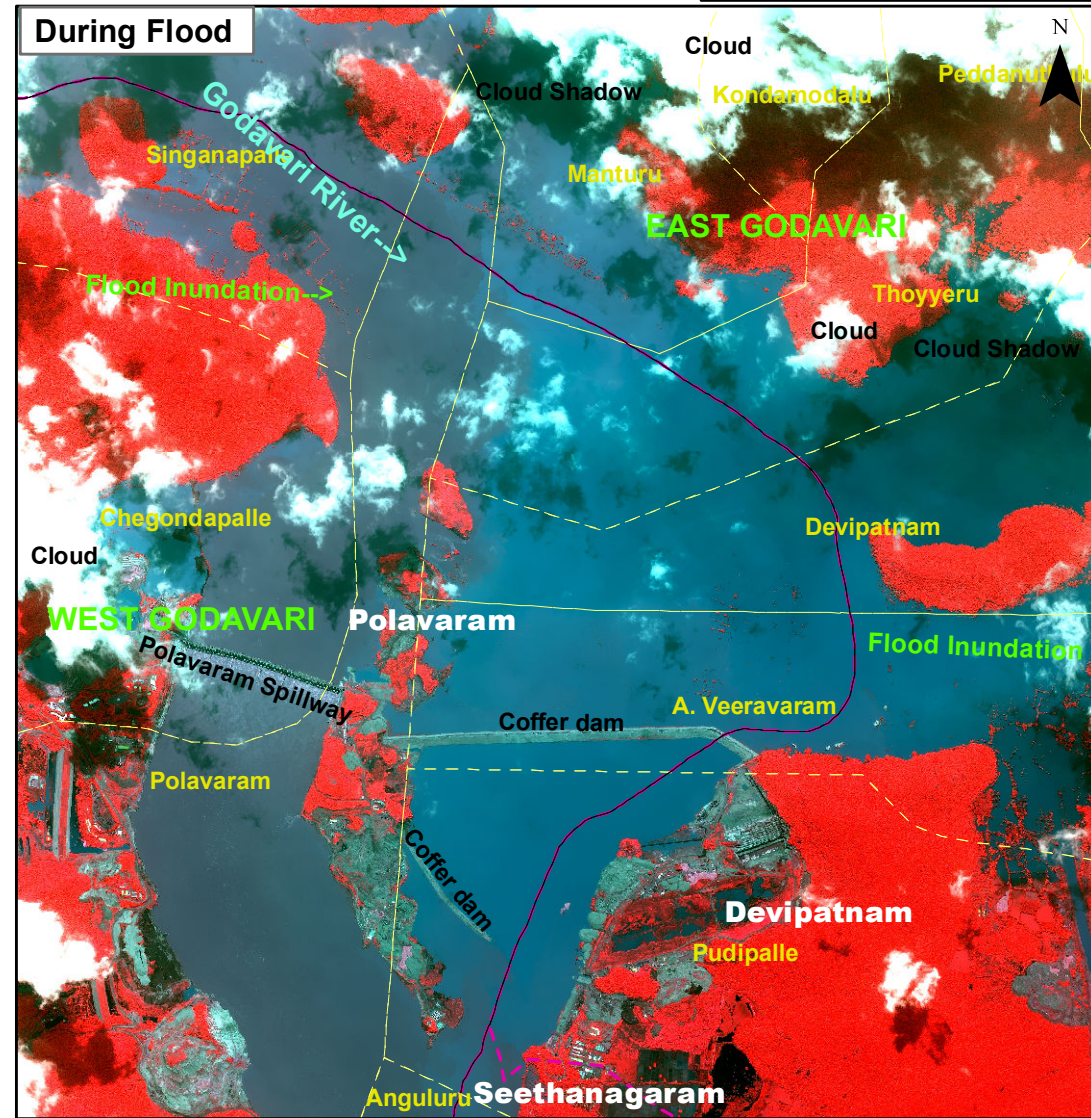
Flood Inundated areas in Part of East and West Godavari Districts,Andhra Pradesh State

DISASTER EVENT ID: 07-FLD-2022-AP
MAP ID: 2022/08

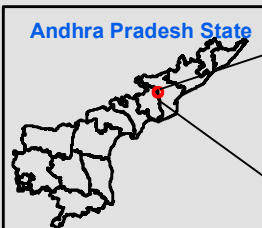
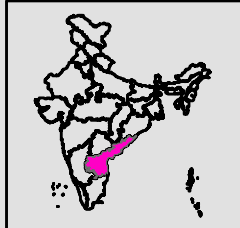
CARTOSAT 2E Image of 08-March-2022



PLEIADES Image of 19-July-2022



Location Map



Part of East & West Godavari districts



Legend

- Village Boundary
- Mandal Boundary



nrsc



RRES
National Remote Sensing Centre, ISRO
Dept. of Space, Govt. of India
Hyderabad- 500 037
E-Mail: flood@nrsc.gov.in
www.nrsc.gov.in

This product is prepared using Pleiades satellite
image received under International Charter, Call ID-877

For official use